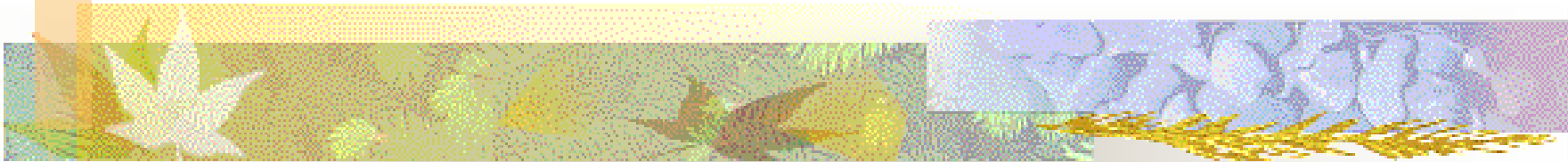


Dedicated Education Units *Practice Perspective*



Cindy Lorion, RN, MSN, CMSRN, NE-BC
Nurse Manager, Neurovascular Telemetry
and Orthopedic Units



Background

- DEU started in 2003 on 9 East
 - 9 East is a 42-bed Neurovascular-Telemetry Unit
- DEU started in 2005 on 9 West
 - 9 West is a 25-bed Orthopedic Unit



Dedicated Education Unit

- Both units take junior and senior nursing students
- Each rotation lasts six weeks and students complete two medical-surgical rotations



Unit Approach

- Clinical instructors
 - Two students for the entire six weeks and the clinical instructors are practicing RN's on the unit
- Juniors
 - start with one patient, advance to two patients when ready
- Seniors
 - Care for two patients/student for entire six week rotation



Unit Approach – cont'd

- All staff on the unit are invested in the students learning experience
 - CNA's teach ADL's
 - Physicians interact with students and invite them to the OR to observe a surgery
 - Rehab staff teach proper body mechanics
 - Respiratory staff teach assessments
 - Dietary staff discuss nutrition issues



Roles and Responsibilities

- Clinical Instructor (CI)
 - Teach, mentor, guide and inspire students
 - Provide ongoing reflection on student performance
 - Collaborate with faculty for mid-term and final evaluation
 - CI is baccalaureate prepared; CT is associate degree prepared--both referred to under the umbrella term of "CI"



Outcomes of the DEU

- Increased professionalism of nurses
 - Staff have returned to school for BSN, MS, PhD
 - Staff obtain certification in their specialty
 - Staff participate in scholarly presentations
 - “Positive turnover”
 - Clinical ladder promotion
 - DEU advocate and unit leadership
 - Ownership – “We are a DEU”
 - Adjunct faculty appointment



Expectations for a DEU Realized

- Practice informs education and education influences practice
- All nurses, especially in Magnet facilities, help to educate the next generation of nurses
- Clinical teaching will be better than under previous teaching methods
- Faculty and staff have a mutual respect for one another's knowledge and skills



In Closing

- Not all DEU's need to look the same
- Creating a culture where learning is expected and encouraged helps improve and inform practice
- We are investing in our future



References

- Edgecombe, K., Wooten, K., Gonda, K. & Mason, P. Dedicated education units: 1 A new concept for clinical teaching and learning. *Contemporary Nurse* 1999;8 , 166-71.
- Gonda, K., Wooten, K., Edgecombe, K. & Mason, P. Dedicated education units: 2 An evaluation. *Contemporary Nurse* 199;8 172-76.
- MacIntyre, RC, Murray, TA, Teel, CS, & Karshmer, JF. Five Recommendations for prelicensure clinical nursing education. *Journal of Nursing Education* 2009:48, 447-453.
- Moscato, SR, Miller, J., Logsdon, K., Weinberg, S. & Chorpenning, L. Dedicated education unit: An innovative clinical partner education model. *Nursing Outlook* 2007;55, 31-37.
- Oregon Nursing Leadership Council. ONCL strategic plan:Solutions to Oregon's nursing shortage. Available at:
<http://oregoncenterfornursing.org/shortage.php>.
- Wooten, K & Gonda, J. Clinician and student evaluation of a collaborative clinical teaching model. *Nursing Education in Practice* 2004;4, 120-27.